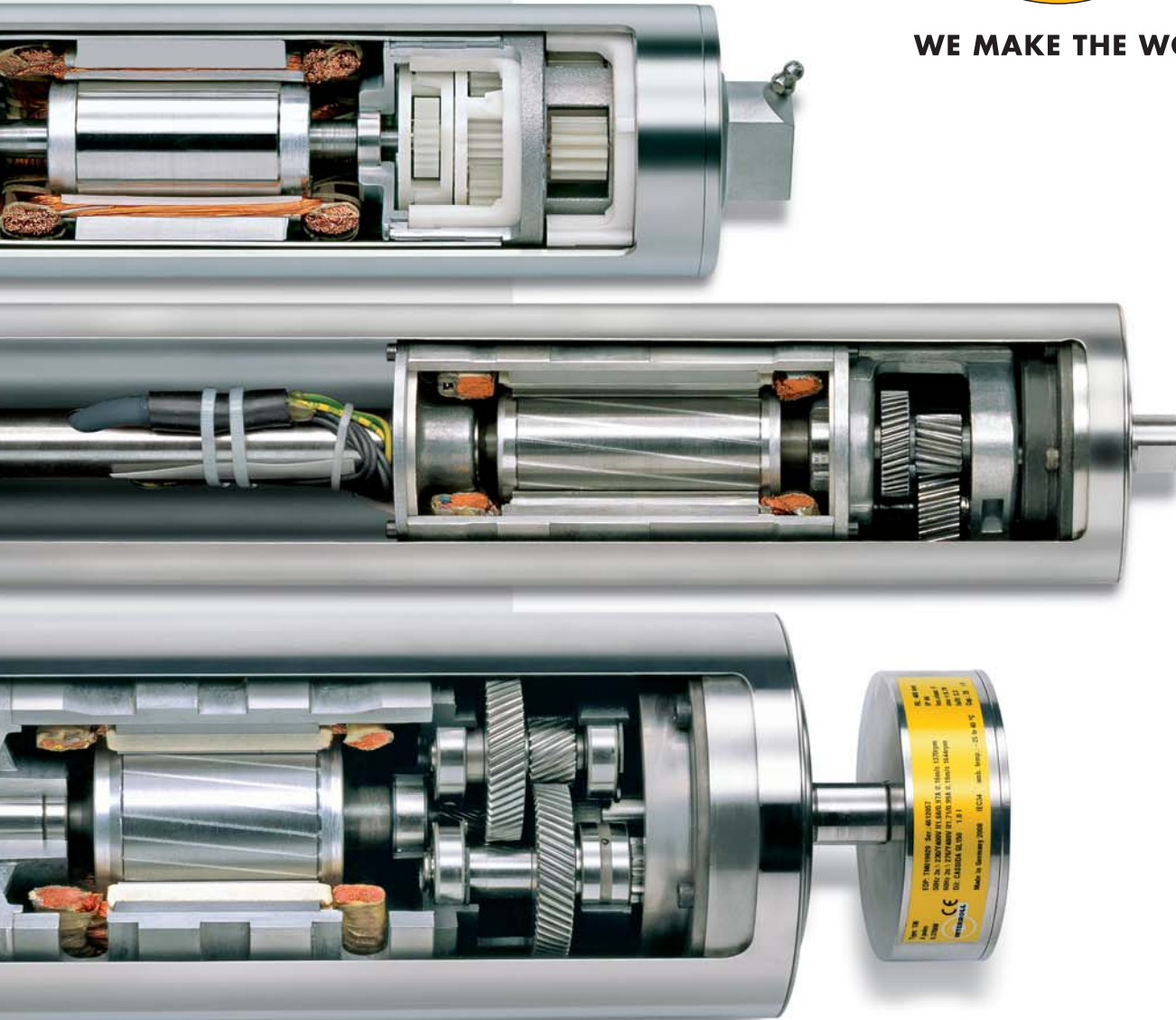




WE MAKE THE WORLD MOVE



WWW.INTERROLL.COM

INTERROLL
CORPORATE
ART

D R U M M O T O R S

F O R U N I T L O A D H A N D L I N G

O V E R V I E W

If you want to be the leader of the pack in your market, you need to be sure you can count on your partners, day and night, for solutions beyond the obvious as well as unmatched quality and service. This is synonymous with Interroll and its diversified range of Drum Motors, which are designed to tackle even the most difficult challenges in unit load handling applications. Interroll Drum Motors, unique in concept and design, produce cutting-edge solutions, which will raise the overall efficiency and reliability of customer applications in materials handling the world over.

eliminate this risk due to the smooth, profiled, stainless steel finish, totally sealed design and ingress protection of IP66 or IP67.

AT LEAST 32 % MORE ENERGY EFFICIENT

Independent test results showed Interroll Drum Motors used 32 % less energy (unloaded) and 47 % less energy (loaded) than a comparable geared motor drive.

DRUM UP MORE BUSINESS

AT THE HEART OF THE CONVEYOR

Interroll Drum Motors have been specifically designed for belt conveyors and associated material handling equipment. This means that we take the worry and hard work out of your drive system, leaving you to do what you do best, designing the best conveyor for the application. But it doesn't stop there. We have over 50 years experience in the food processing industry and other extremely demanding industrial applications which we are happy to share with you (yes, we are all heart!) There is no doubt about it; the Interroll drive provides a quick and easy way of building maintenance-free, hygienic and energy-efficient belt conveyors. What more could you ask?

EASE OF INSTALLATION SAVES TIME AND MONEY

With fewer installation parts, Interroll Drum Motors are much quicker and easier to install than conventional drive systems, requiring less than a quarter of the time needed to fit a multi-component drive. Fewer parts mean cost reduction for conveyor design and purchasing of parts.

BUILT TO WITHSTAND THE WORST CONDITIONS

With the entire drive mechanism totally enclosed in a steel shell sealed to IP66/67 standards, Interroll Drum Motors will keep operating at 100 % in harmful environmental conditions such as water, dust, grit, chemicals, grease, oil and even during high pressure wash-down procedures.

FOOD GRADE QUALITY

Tests have identified conventional external belt drive systems as being the main source of contamination in food processing. Interroll Drum Motors, however,

HIGHER OUTPUT

Interroll Drum Motors have a much higher efficiency than conventional drives, which normally transfer approximately 75 % of their mechanical efficiency to the belt, compared to the Interroll drive which transfers up to 97 %.

SPACE-SAVING DESIGN

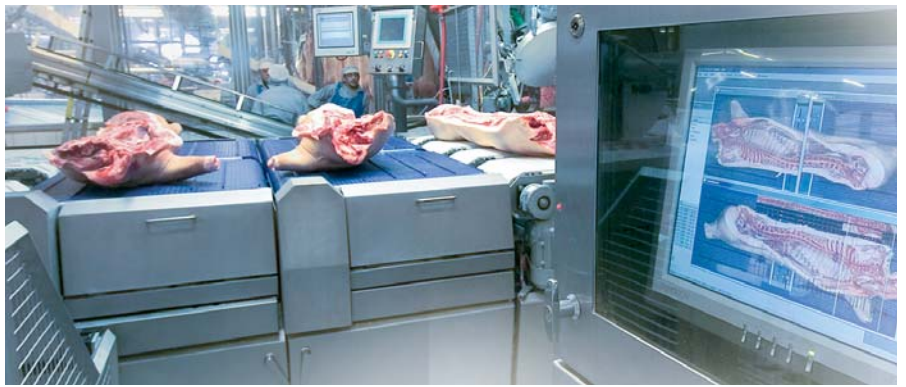
Because the drive unit and bearings are mounted within the drum shell, the Drum Motor takes up much less space than conventional drives such as gear motors. No need for costly extras like chains, v-belts, couplings, bearings, support structures and special guarding.

SAFE AND SOUND WORKING ENVIRONMENT

An Interroll Drum Motor enhances the safety of your working environment. As a self-contained component without protruding parts and with fixed external shafts, it is probably the safest drive unit available for state-of-the-art material handling equipment. The only moving parts are the drum shell and bearing housings. What is more, our new Drum Motors incorporating durable high grade polished steel gears, reduce previous sound levels by 18 % and are therefore quieter than many other drives found in the market today.

MAINTENANCE-FREE OPERATION

End-users benefit from an Interroll Drum Motor because it requires absolutely no maintenance. The sealed-for-life Drum Motor design ensures trouble-free conveying of foodstuffs, unit loads or parts under the most arduous conditions. No maintenance results in lower operating costs and higher productivity.



TO SUIT INDIVIDUAL APPLICATIONS, INTERROLL DRUM MOTORS ARE AVAILABLE WITH A WIDE RANGE OF

VOLTAGES, POWERS, SPEEDS, HIGH-TORQUE MOTORS, ACCESSORIES AND MANY OTHER OPTIONS.

A COMPREHENSIVE PACKAGE OF SOL

DIRECT INTERCHANGEABILITY

Interroll can replace all other makes of drum motors in existing conveyor systems.

MODULAR BELTING

Interroll provides pioneered drive solutions for modular plastic belt conveyors utilising a range of purpose-designed, food quality FDA approved profiled lagging.

Options include profiled; Nitril (NBR) lagging or polyurethane (PU) lagging, stainless steel and Acetyl sprockets or wheels.



REPAIRS AND SERVICING

Interroll offer a 24/7 hotline service and will repair or replace any make or model of motorised drum. Ask for a cost comparison for a replacement.

POWERED ROTARY BRUSHES

Why do rotary brush manufacturers leave the construction of the driving mechanism up to the developer?

We make life easier for you: we build the motor inside the brush!

Whatever your needs, the maintenance-free drum motor is integrated into the rotary brush and can be

mounted horizontally or vertically, saving you space and valuable time during construction.

Our active rotary brushes are suitable for a wide range of applications including food processing, packaging, pharmaceutical and many other industries.

UTIONS TO SUIT YOUR APPLICATION

IDLER PULLEYS

Choose from idler pulleys manufactured from mild steel, stainless steel or with rubber lagging option.



BRACKETS FOR QUICK INSTALLATION

Brackets make the installation of an Interroll Drum Motor quick and easy. They are available in aluminium, steel, cast iron and polyethylene. Screw adjustable tension brackets are also available.



ENCODER

For monitoring revolutions, speeds, distance and direction ask for an Interroll Drum Motor with integrated encoder (incremental, absolute resolver).

The combination of drum motor, encoder and frequency converter permits high-levels of flexibility, drive control and system data feed back.



VARIABLE SPEED CONTROL

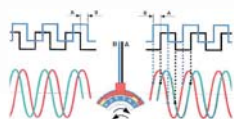
To provide maximum flexibility of speed and control, all Interroll Drum Motors can be connected with most types of frequency converters.

FREQUENCY CONVERTER

Take advantage of our coordinated package, consisting of an Interroll Drum Motor supplied with a frequency converter pre-set and optimised with the motor parameters and on site "plug & play" facility, to:

- Vary the belt speed and direction for several systems or for auxiliary conveyor systems.
- Vary the belt speed and direction in machines, e.g., for various dispensing operations.
- Optimise the starting and reversing torque for intermittent stop/start & reversing operations.

These frequency converters can easily be integrated into simple or more complex control systems.



INTERROLL DRUM MOTORS: PRODUCT OVERVIEW

Diameter mm	Type	Phase	Unit	min./max. performance range											
81.5	80s	1-phase	Power	kW	0.025	0.05	0.075	0.085	0.11						
			Belt speed	m/s	0.05 - 0.44	0.10	0.12	0.15 - 0.88	0.18 - 0.88						
			Belt pull	N	425 - 51	425	531	482 - 87	519 - 113						
81.5	80s	3-phase	Power	kW	0.04	0.05	0.06	0.075	0.085						
			Belt speed	m/s	0.07 - 0.09	0.10	0.30 - 0.44	0.12	0.15 - 0.88						
			Belt pull	N	486 - 378	425	180 - 123	531	482 - 87						
81.5	80i	1-phase	Power	kW	0.05	0.08									
			Belt speed	m/s	0.10 - 0.50	0.20 - 1.00									
			Belt pull	N	452 - 102	339 - 76									
81.5	80i	3-phase	Power	kW	0.018	0.04	0.07	0.12							
			Belt speed	m/s	0.05 - 0.08	0.10 - 0.50	0.10 - 1.00	0.20 - 1.00							
			Belt pull	N	352 - 200	352 - 79	653 - 68	515 - 116							
113.3	113s	1-phase	Power	kW	0.06	0.08	0.11								
			Belt speed	m/s	0.12-0.98	0.41 - 0.46	0.12-0.98								
			Belt pull	N	416 - 55	241-214	764 - 101								
113.3	113s	3-phase	Power	kW	0.04	0.11	0.16	0.18	0.33						
			Belt speed	m/s	0.07 - 0.11	0.13 - 0.49	0.19	0.22 - 1.06	0.38 - 2.12						
			Belt pull	N	515 - 315	719 - 204	721	695 - 153	738 - 140						
113.5	113i	1-phase	Power	kW	0.08	0.18	0.23								
			Belt speed	m/s	0.10 - 0.30	0.17 - 0.50	0.40 - 1.50								
			Belt pull	N	695 - 248	970 - 346	565 - 148								
113.5	113i	3-phase	Power	kW	0.035	0.07	0.08	0.1	0.15	0.18	0.225	0.30	0.37		
			Belt speed	m/s	0.05 - 0.08	0.05 - 0.08	0.10 - 0.35	0.12 - 0.35	0.09 - 0.70	0.12 - 0.50	0.40 - 1.50	0.20 - 0.70	0.40 - 1.50		
			Belt pull	N	688 - 446	1369 - 887	691 - 212	797- 284	1528-199	1362-356	551-144	1507-394	905-237		
138	138i	1-phase	Power	kW	0.25	0.74									
			Belt speed	m/s	0.13 - 0.40	0.40 -1.90									
			Belt pull	N	1875 - 641	1771- 369									
138	138i	3-phase	Power	kW	0.09	0.18	0.25	0.37	0.55	0.75	1.00				
			Belt speed	m/s	0.04 - 0.10	0.06 - 0.45	0.08 - 0.65	0.13 - 0.95	0.25 - 1.90	0.20 - 0.95	0.40 - 1.90				
			Belt pull	N	2131 - 886	2586 - 366	2699 - 382	2720 - 385	1916 - 271	3420 - 758	2267 - 502				
164	165i	1-phase	Power	kW	0.11	0.60									
			Belt speed	m/s	0.20 - 1.00	0.20 - 1.00									
			Belt pull	N	515 - 104	2900 - 587									
164	165i	3-phase	Power	kW	0.15	0.37	0.55	0.75	1.1	1.5	2.2				
			Belt speed	m/s	0.06 - 0.30	0.08 - 0.95	0.12 - 0.60	0.15 - 0.95	0.25 - 2.00	0.40 - 0.95	0.50 - 2.55				
			Belt pull	N	2248 - 455	4454 - 371	4453 - 902	4679 - 767	4254 - 535	3723 - 1490	4253 - 828				
217.5	216i	1-phase	Power	kW	0.11	0.60									
			Belt speed	m/s	0.25 - 1.35	0.25 - 1.30									
			Belt pull	N	389 - 79	2186 - 443									
217.5	216i	3-phase	Power	kW	0.15	0.37	0.55	0.75	1.1	1.5	2.2				
			Belt speed	m/s	0.08 - 0.10	0.10 - 1.30	0.20 - 0.80	0.20 - 1.25	0.40 - 2.60	0.50 - 1.30	0.65 - 2.60				
			Belt pull	N	1695-1265	3359 - 280	2506 - 680	3528 - 578	2575 - 404	2808-1123	3207 - 809				



OPTIONAL POWER

To expand the field of operations, where electricity is unavailable or undesirable, Interroll offer a full range of hydraulic powered drum motors.

PALLET DRIVE SOLUTIONS

The Interroll Pallet Drive concept provides a space-saving, cost-effective and working environment friendly alternative to conventional driven rollers using gear motors with chains or belts and to outdated manual methods of pallet transportation in packaging, distribution, and logistics centres.

Pallet Drives, driven Rollers and Slave Rollers are designed to fit most common pallet conveyor modules and are suitable for handling all standard pallet sizes for maximum loads of up to 1,000 kg.

This unique concept provides full ZPA (zero pressure accumulation) functionalities for straight modules, turntables, transfer cars and other transfers.



MADE TO PERFORM – BEYOND ALL BOUNDARIES

Powered or gravity driven: Our product range represents a reliable quality standard for dynamic, efficient material flow across all continents and in all sectors.

With an experienced eye for the big picture, we offer you the kind of components that are versatile and essential building blocks in the portfolio of any successful planner or developer.





Europe/Nordic

Denmark

Interroll Nordic A/S
Hammerholmen 2-6
DK-2650 Hvidovre
Tel. +45 36 88 33 33
Fax +45 36 88 33 72
dk-sales@interroll.com

Interroll Service
Islandsvej 5
DK-7900 Nykøbing M.
Tel. +45 97 71 15 55
Fax +45 97 71 16 55
dk-sales@interroll.com

Iceland

IBH ehf
Dugguvogur 10
104 Reykjavik
Iceland
Tel. +354 562 6858
Fax +354 562 6862
ingi@ibh.ehf.is

Finland

Tel. +358 9 54 94 94 00
Fax +358 9 54 94 94 16

Norway

Tel. +47 32 88 26 00
Fax +47 32 88 26 10

Sweden

Tel. +46 35 22 70 77
Fax +46 35 22 70 78

Western/Southern Europe

France

Interroll S.A.S.
ZI de Kerannou
B.P. 34
F-29250 Saint Pol de Léon
Tel. +33 2 98 24 41 00
Fax +33 2 98 24 41 02
f-sales@interroll.com

Italy

Rulli Rulmecca S.p.A.
Via A. Toscanini, 1
I-24011 Almè (Bg)
Tel. +39 035 4300 111
Fax +39 035 545 523
i-sales@interroll.com

Portugal

Rulmecca Interroll de Portugal Lda
Apartado, 69 Centro Civico
P-6201-909 Covilhã
Tel. +351 275 330 780
Fax +351 275 990 789
p-sales@interroll.com

Spain

Interroll España S.A.
Parc Tecnològic del Vallès
C/Dels Argenters, 5
Edificio 1, módulos Bp y Cp
E-08290 Cerdanyola del Vallès
Tel. +34 902 11 08 60
Fax +34 93 586 48 95
e-sales@interroll.com

United Kingdom

Interroll Ltd.
Brunel Road
Earlstrees Industrial Estate
GB-Corby, Northants NN17 4UX
Tel. +44 1536 200 322
Fax +44 1536 748 505
gb-sales@interroll.com

Central Europe

Germany

Interroll Fördertechnik GmbH
Höferhof 16
D-42929 Wermelskirchen
Tel. +49 2193 23 0
Fax +49 2193 20 22
d-sales@interroll.com

Austria

Tel. +49 2193 23 187
Fax +49 2193 23 164

Belgium

Tel. +49 2193 23 131
Fax +49 2193 23 164

Luxembourg

Tel. +49 2193 23 190
Fax +49 2193 23 164

Netherlands

Tel. +49 2193 23 151
Fax +49 2193 23 164

Switzerland

Tel. +49 2193 23 190
Fax +49 2193 23 164

Eastern Europe

Czech Republic

Interroll CZ, s.r.o.
Na Rádku 7/3172
CZ-690 02 Břeclav
Tel. +420 519 330 210
Fax +420 519 330 211
cz-sales@interroll.com

Hungary

Tel. +36 23 337 891
Fax +36 23 337 892

Poland

Interroll Polska Sp. z o.o.
ul. Plochocińska 85
PL-03-044 Warszawa
Tel. +48 22 741 741 0
Fax +48 22 741 741 1
pl-sales@interroll.com

Slovakia

Tel. +421 2 4363 8102
Fax +421 2 4342 7294

Slovenia

Tel. +386 1 56 56 370
Fax +386 1 56 56 372

Turkey

Rol-er Makina SAN. VE TIC. LTD. STI.
Pembegül Sok. Dostlar Apt.
No. 12 D. 10 Suadiye
34740 Istanbul, Türkiye
Tel. +90 216 386 37 75
Fax +90 216 386 38 22
tr-sales@interroll.com

Near East

Israel

ComTrans-Tech Ltd.
P.O.B. 17433
Tel Aviv 61174
Israel
Tel. +972 54 4 27 27 47
Fax +972 3 7 44 08 64
il-sales@interroll.com

Africa

South Africa

Interroll SA Pty. Ltd.
P.O. Box 327
Isando 1600
37 Director Road, Spartan Ext 2,
1619
South Africa
Tel. +27 11 281 9900
Fax +27 11 252 9083
za-sales@interroll.com

North & South America

USA

Interroll Corporation
3000 Corporate Drive
USA-Wilmington, NC 28405
Tel. +1 910 799 11 00
Fax +1 910 392 38 22
usa-sales@interroll.com

Canada

Interroll Components Canada Ltd.
8900 Keely Street
Unit 2 & 3
Concord, Ontario L4K 2N2
Canada
Tel. +1 905 660 44 26
Fax +1 905 660 41 59
cdn-sales@interroll.com

Interroll Canada Ltd
Drives and Rollers Canada
1201 Gorham Street
Newmarket Ontario L3Y 8Y2
Canada
Tel. +1 905 727 33 99
Fax +1 905 727 33 99
cdn-sales@interroll.com

Brasil

Interroll Logistica
Elementos para Sistemas
Transportadores Ltda.
Av. Alexandrina das Chagas
Moreira 945
Bairro Distrito Industrial
Pindamonhangaba - SP
CEP 12412-800
Brasil
Tel. +55 12 3648 8021
Fax +55 12 3648 8164
sa-sales@interroll.com

For other countries in South America, please contact:

Interroll España S.A.
Parc Tecnològic del Vallès
C/Dels Argenters, 5
Edificio 1, módulos Bp y Cp
E-08290 Cerdanyola del Vallès
Tel. +34 93 594 77 55
Fax +34 93 586 48 95
e-sales@interroll.com

Asia

China

Interroll (Suzhou) Co. Ltd.
Unit 10B, Modern Industrial Square
No. 333 Xing Pu Road
Suzhou Industrial Park
Suzhou, Jiangsu Province
People's Republic of China
Postal Code: 215126
Tel. +86 512 6256 0383
Fax +86 512 6256 0385
cn-sales@interroll.com

India

Interroll Drives and Rollers India
Private Limited
SF 12, KSSIDC Building 3rd Stage
Peenya, Bangalore
Bangalore - 560058
Kamataka, India
Tel. +00 080 2359 5904/2836 4996
Fax +00 080 2349 5241
in-drummotors@interroll.com

Japan

Interroll Japan Co. Ltd.
302-1 Shimokuzawa
Sagamihara-shi
Kanagawa 229-1134
JAPAN
Tel. +81 42 764 26 77
Fax +81 42 764 26 78
jpn-sales@interroll.com

Korea

Interroll Korea Corporation
Room 301, Dongsan Bldg, 333-60
Shindang-Dong, Choong-ku
Seoul
Tel. +822 2 231 1900
Fax +822 2 254 36 83
kr-sales@interroll.com

Singapore

Interroll (Asia) Pte. Ltd.
386 Jalan Ahmad Ibrahim
629156 Singapore
Republic of Singapore
Tel. +65 6266 6322
Fax +65 6266 6849
sgp-sales@interroll.com

Thailand

Interroll (Thailand) Co. Ltd.
41/6 Moo 6, Bangchalong,
Bangplee
Samutprakarn 10540
Tel. +66 2 337 0188 91
Fax +66 2 337 01 92
th-sales@interroll.com

Australia & New Zealand

Australia

Conveyor Solutions Australia Pty. Ltd.
70 Keon Parade,
Thomastown
VIC 3073
Australia
Tel. +61 3 9460 2155
Fax +61 3 9460 2029
aus-sales@interroll.com

New Zealand

Automation Equipment (NZ) Ltd.
45 Colombo Street
Frankton
Hamilton
New Zealand
Tel. +64 7847 20 82
Fax +64 7847 71 60
nz-sales@interroll.com

For other countries please
see contacts at
www.interroll.com